

Square Peg Ranch Newsletter

This last winter was a tumultuous one for us here at Square Peg Ranch. In this edition of the newsletter, we will introduce you to three new horses and update you on the rest of the herd. We will also take some time to say farewell to some friends, both human and equine, whom we miss terribly.

Issue #6 Spring 2008

In Memory

Square Peg Ranch says goodbye to some dear friends.

Page 2



New Kids on the Block

Meet the ranch's three newest horses!

Page 3

Summer Camp Schedule

Camps are filling quickly. Reserve a spot now!

Page 4



Wish List

Check and see if you can donate items to keep our programs working

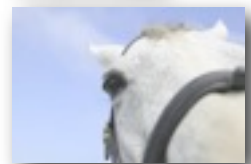
Page 5

Volunteer Spotlight

Our own Courtney St. Aubin gives praise to some special young ladies who work hard at the ranch.

Page 5

A call to Action



Square Peg needs your help in order to continue this work.

[Please donate.](#)

Page 6

SQUARE PEG RANCH 2399 PURISIMA CREEK ROAD ROAD, HALF MOON BAY, CA 94019 PHONE: 650.284-5064

Ranch reflections....

Winter days are always the hardest here at the ranch with precious little daylight to finish the chores that constantly need doing. The grass doesn't grow, the mud thickens, your nose keeps running and the rain always seems to come when you need it the least. We try to make the most of the quiet season to rest and re-train, to reflect and to prepare for an exciting season ahead. In the meantime, we are so lucky to be able to ride the fantastic redwood trails of the Purisima Creek Open Space. The clean winter air and the rushing creek remind us that we are blessed with living in such a beautiful place.

We have brought in some fantastic new volunteers. Watching them grow in the role of mentor and helper always inspires me. Their help here at the ranch

QUOTE:

"It is no longer survival of the fittest but the survival of compassion."

- Terry Tempest Williams



can never be under-estimated. We simply could not run this program with 16 equine partners, all the students plus the other animals if it weren't for our amazing team of volunteers and supporters.

Now Spring is here and there are more projects as the days get longer. New horses, new students and new opportunities energize us to face new challenges and achieve new goals. If you haven't seen the ranch in Spring, now is your chance to see the flowers blooming, the horses shedding shaggy winter coats and everything taking on a fresh new look. We would love your help in making our space safer for students, healthier for the horses and more beautiful for all. This newsletter will give you plenty of opportunities to choose projects to support. I hope you will not be shy in joining us to achieve our mission; to turn "I wish" into "I can."

Happy Trails,
joell





In Memory

Goodbye to Jim Nickoff

We lost Jim the night of December 16, 2007. Jim was our founding board treasurer, and a dear friend. From Square Peg's inception, Jim was there with advice, help and generous donations. Jim dedicated his entire career to helping non-profit organizations such as Project Open Hand, Equality California, the STOP AIDS project and others. He also served as



treasurer, or in key financial positions, on the election campaigns of Barbara Boxer, Mark Leno, Harry Britt, Angela Alioto, Leslie Katz, and many others.

Jim was a hero in every sense of the word. He fought for what he believed in, and he was a friend that could always be counted on. There was never a dull moment with Jim around. He had an ability to make you laugh even when you were just sure there was no humor in the situation. We will be forever in Jim's debt for so much, but maybe most for all the smiles and laughs that he generated. We join his partner Dave Lawson in mourning the loss of a true hero much too soon.



Goodbye to Sequoia

Sequoia, affectionately known as Squish to his friends, passed away during the night of December 1, 2007. For six lovely months, Sequoia lived at Square Pegs. He'd developed a tripping habit that was a mystery to the vets and to the people who loved him.

Jennifer Leeds brought Sequoia to Square Pegs knowing full well that she might never be able to ride this horse. She selflessly supported him as we called in our team of health professionals to try to solve the tripping riddle. Special thanks go to Dr. Ashton Cloninger, Dr. Nancy Elliot, Jacquie Becker, Steve Weiberg and to Dr. Sinead Devine. In the meantime, Squish bonded with Jag, his best friend, and Willa, the love of his life. Squish spent the last 6 months of his life happily frolicking in his paddock with friends.

At evening feed on November 30, I fed and blanketed Sequoia and kissed him on the nose. He followed me back to the gate as if he had something to say. I kissed him again, patted his shoulder and left. In my mind I will always believe that he was saying goodbye. It's just one more lesson in being mindful and present at every moment that we share with people and animals that we love. I think of him now galloping pain-free in green pastures.

Meet the new kids on the block

Irresponsible King aka: Stan

6 year old chestnut Thoroughbred gelding
Donated by Mercedes Stables



Comes to us from the racetrack with a few injuries. If you are a fan of racing, click [here](#) to see this fantastic pedigree. This son of Kingmambo is also out of a phenomenal female line. His second dam (maternal grandmother) is Eliza who won over a million dollars and was the 1992 Champion 2 year old filly. Stan might have been racing royalty, but around here, he's just a classy guy with a sense of humor. He's going to need time and love from Square Peg supporters, volunteers and students. We hope to have Stan out on the trails by spring. We have our vet, Dr. Ashton Cloninger to thank for bringing us together with his owner, Mercedes Stable, to receive this beautiful gelding.



Bert

19 year old Dutch Warmblood
Donated by Jenny Fichmann

This handsome gelding sure knows how to strut his stuff! We were amazed to find out how gentle he is as well. Bert has had an exciting life: Born in Holland, imported as a Grand Prix Jumper until Marianna Danielson, who rode and showed our darling Legacy throughout most of his career, saw something special in Bert and brought him along as a dressage horse. Jenny Fichmann competed Bert to 4th level dressage and enjoyed his marvelous company for a long time. When Bert was done competing in dressage, Jenny started looking for Bert's "forever home". Jenny found us through our longtime supporter Rachel Williamson. You just have to meet this special horse to appreciate Jenny's generosity.



Sweet Tea 'N Me aka: Special T, "T" or Jack

19 year old brown Tb gelding
Donated by Denise Seymore



Why would a horse have so many names you ask? Because he's had so many jobs and has

done them all brilliantly! "Jack" began as a stakes-placed race horse, then moved onto a very successful career as a show hunter in the Open, Amateur and Junior divisions. Chronic uveitis ended this beautiful gelding's show career. He needed surgery to remove the eye. However, Jack is fully adapted to having one eye and makes no excuses as he pushes his way to the front of the pack on every trail ride. We love his verve and spunk. We have Denise Seymore to thank for donating him.

The kids have decided to call him "Jack" for "Black Jack" or "One-Eyed Jack" or "Jack-Jack" the list goes on.....





Camp A June 09 - 13 Afternoon
Beginner/Intermediate

Camp B June 16 -20 Reserved
Morning

Camp C June 16 -20 POLO
Afternoon

Camp D June 23 - 27 Beginners
Afternoon

June 30 to July 4 **NO LESSONS**

Camp E July 7 - 11 Intermediate
Morning

Camp F July 7 to 11 Beginners
Afternoon

Camp G July 14 -18 Intermediate
Morning

Camp H July 14 -18 Beginner
Afternoon

Camp I July 21- 25 Beginner
Morning

Camp J July 21- 25
Beginner/Intermediate
Afternoon

Camp K July 29 - July 30
Jack Brook Horse Camp Overnight
Intermediate and Above

August 4 - 8 **NO LESSONS**

Camp L August 11 - 15
Beginner/Intermediate
Morning

Camp M August 11 - 15 POLO
Afternoon

Camp N August 18 - 22
Beginner/Intermediate
Morning

Camp O August 18-22
Beginner/Intermediate
Afternoon

Camp P August 25-27 Jack Brook
Horse Camp Overnight
Intermediate and Above

Camp Q September 2 -5
Jack Brook Horse Camp Overnight
Intermediate and Above

Camp Details

- * Morning camps run from 9:30AM until 1PM
- * Afternoon camps run from 2PM to 5:30PM
- * Camps run Monday thru Friday
- * Makeups by special arrangement
- * Camps are limited to 5 riders per camp
- * Camp Fee: \$350 per camper.
- * Fees due the 1st day of camp.
- * Bring a snack, a water bottle and layered clothes - this is the Coast!
- * Jack Brook Horse camp details by request.
- * Camps fill up fast so email right away to reserve your spot(s)

joell@squarepegfoundation.org

www.everyonefits.org

Ranch Phone 650.284-5064



Wish List

The support of the local community is essential for Square Pegs to do the work we do. Please browse this list and see if there is anything you are able to contribute.

- Digital Camera
- Tack (in good condition)
- Building supplies; lumber, decomposed granite, sand, gravel
- Tack trunks & storage bins
- Grass/flower/vegetable seed
- Equine wall charts
- Eco-friendly laundry, bathroom and cleaning products
- Art supplies
- Horse books and videos
- BBQ Grill
- Computers (Mac OS)
- Horse clippers
- Solar powered outdoor lights
- Paving tiles for the barn aisle
- Planter boxes and flowers
- Patio furniture
- Adjustable fit helmets
- Shovels, pitchforks, wheelbarrows
- Jumps
- Polo equipment
- Carrots!
- Cat food
- Commercial-size washer/dryer
- All natural fly sprays such as Larry's or Eqyss Marigold Spray
- Wood chips

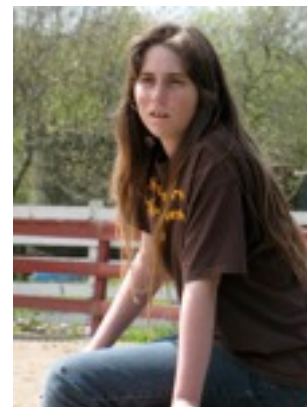
*The Square Peg Foundation is a registered 501(c)(3) corporation.
All donations are tax-deductible as allowable by law*

S Q U A R E P E G R A N C H 6 5 0 . 2 8 4 - 5 0 6 4

Volunteer Spotlight: *by Courtney St. Aubin*



In the world there is a magical connection between girls and horses. Maybe it is the gentle spirit of the amazing creature or the soft gaze of love that is returned by the young lady; decidedly we shall never know. But here on the Square Peg Ranch we have two ladies that have transformed their horse fever into an amazing work ethic and remarkable will to help and nurture the spirit of our wonderful partners, our horses. Each young lady brings a different and equally important part of herself into the Square Pegs team, and over the past several weeks and months we have seen them transform into not only impressive young horse women, but into a vital part of our team. Farris and Margot, my hat's off to you! We cherish both of you and all you do for the ranch.





A call to action

Square Peg Ranch cannot operate without your support. 76% of our annual budget comes directly from private donors, such as you. We are achieving our mission to turn "I wish" into "I can" every single day. We are asking you to search your heart and make your donation today.

Donations are tax-deductible as allowable by law. Here are several ways you can help:

Sponsor a horse: Many of our horses are available for financial sponsorship. This is a great way to be very important part of the ranch. If you have ever dreamed of owning a horse but understand that it takes a tremendous commitment of time and effort, this is a fantastic way for you and your entire family to participate in something special. Square Peg horses are under the care of our vet, Dr. Ashton Cloninger, receive dental care from Ben Koertje MCEqD and regular physical therapy and massage at the healing hands of Jacquie Becker at International Pony Rubs. Our farrier, Steve Wieberg attends to our equine companions as if they were his own. This amazing team of professionals helps keep these special animals happy and healthy. We need your support to do this. An annual donation of \$7,500 covers the costs of these professional's care and the feed, grain and supplies that it requires to keep our herd healthy. Please [contact us](#) about horses available for sponsorship.

Sponsor a summer camp: This summer, we hope to grant 15 scholarships to kids who wouldn't otherwise be able to afford a Summer Camp week at Square Pegs. The cost for each student is \$350. We already have 6 worthy students picked out for some of these camps. Please [contact us](#) if you would like more information.

Donations for Core Operating Costs: Paying these costs is essential to our program. Unrestricted donations go towards our program's operating costs. insurance premiums, lease payments, utilities, supplies and repairs don't sound like exciting projects, but without sponsors, we cannot continue our work. [Please consider a donation today](#), of any size, towards our programs. *You can make all the difference.*

Volunteer Volunteer Volunteer! Roll up your sleeves and come and join the fun. Your efforts at the ranch are priceless. We are always looking for able bodies and minds to help with ranch work, public relations, grants assistance, office work, bookkeeping, instructor's assistants, organizing and events help. Email us today and let us know your availability and your area of interest. You won't know how much fun it is unless you try it!

Also, if you are interested in doing a work day for your office staff, we have had a lot of fun putting your entire office to work. Office volunteer days are a fantastic way to team-build your organization. Email [us](#) with the size of your staff and its availability.

Square Peg Hits the Road!

Last year, we set up a booth at the Driscoll Ranch Gay Rodeo. The booth featured photos of all the ranch critters and their stories. We had a table laden with yummy cookies and a donation jar along with a computer generated slide show of our programs. We invited folks into the booth and offered them a cookie as they looked at the photos of the horses and read their stories. We collected just under \$400 in donations and collected an additional 50 names and email addresses for our mailing list. We met some really nice people and have been invited back.

This year, we would like to improve the booth space and secure sponsors to attend festivals, golf tournaments and horse shows. We need to raise about \$1200 to cover the costs for booth space and to purchase the displays to better showcase what we do. We also need hearty volunteers to help us staff the booth for half-day shifts (mostly weekends).

So please [write](#) to us if you have suggestions about events we should attend (ie: Half Moon Bay Pumpkin Festival, CTETA Horse Trials etc.) and let us know if you are interested in sponsoring or helping to staff the booth for some fun events!

NEW!!! [check out our YouTube Channel here!](#)

Check in from time to time

to see video shorts of life at Square Peg Ranch

